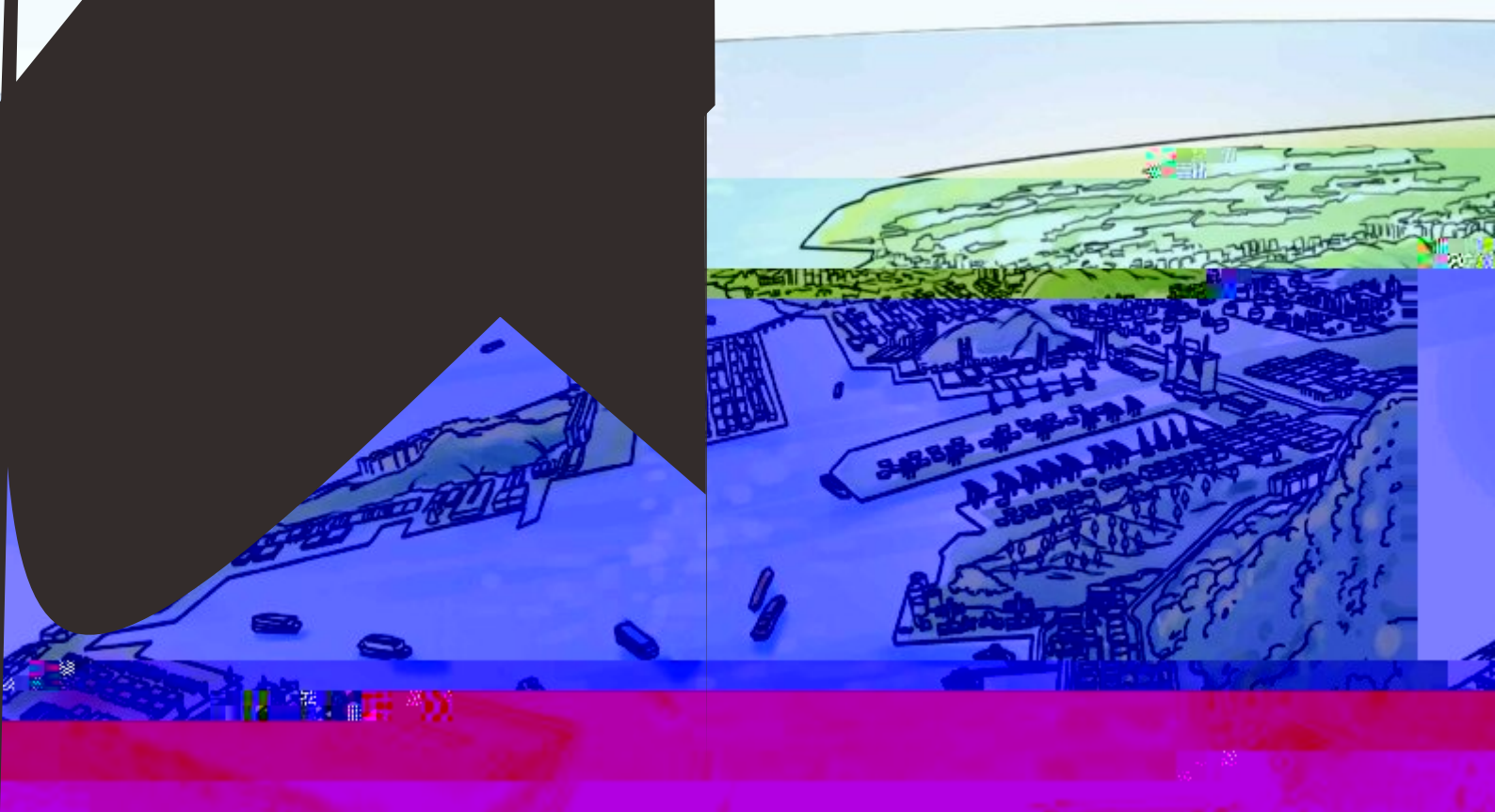




上市，是深交

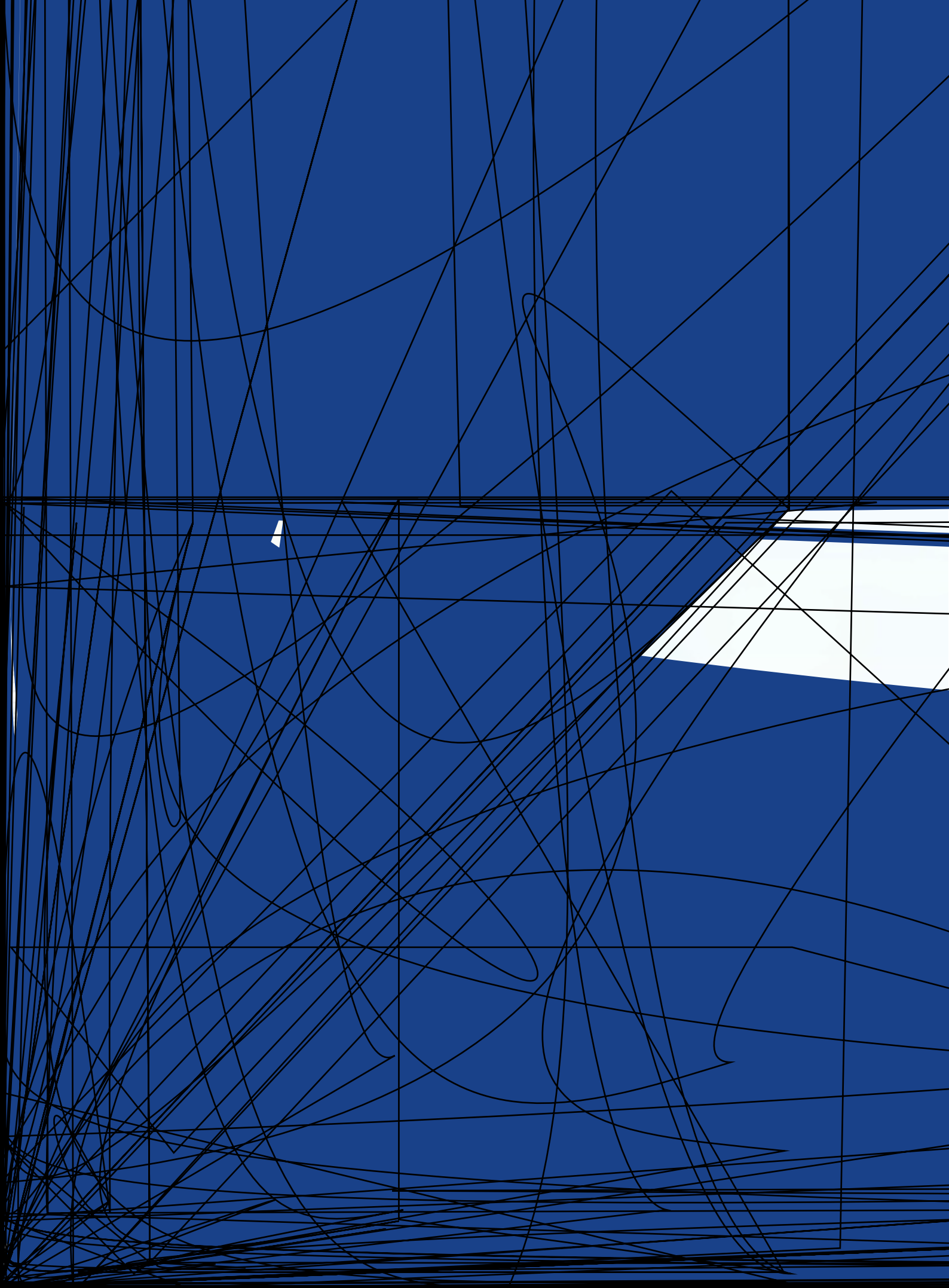


# 公司战略

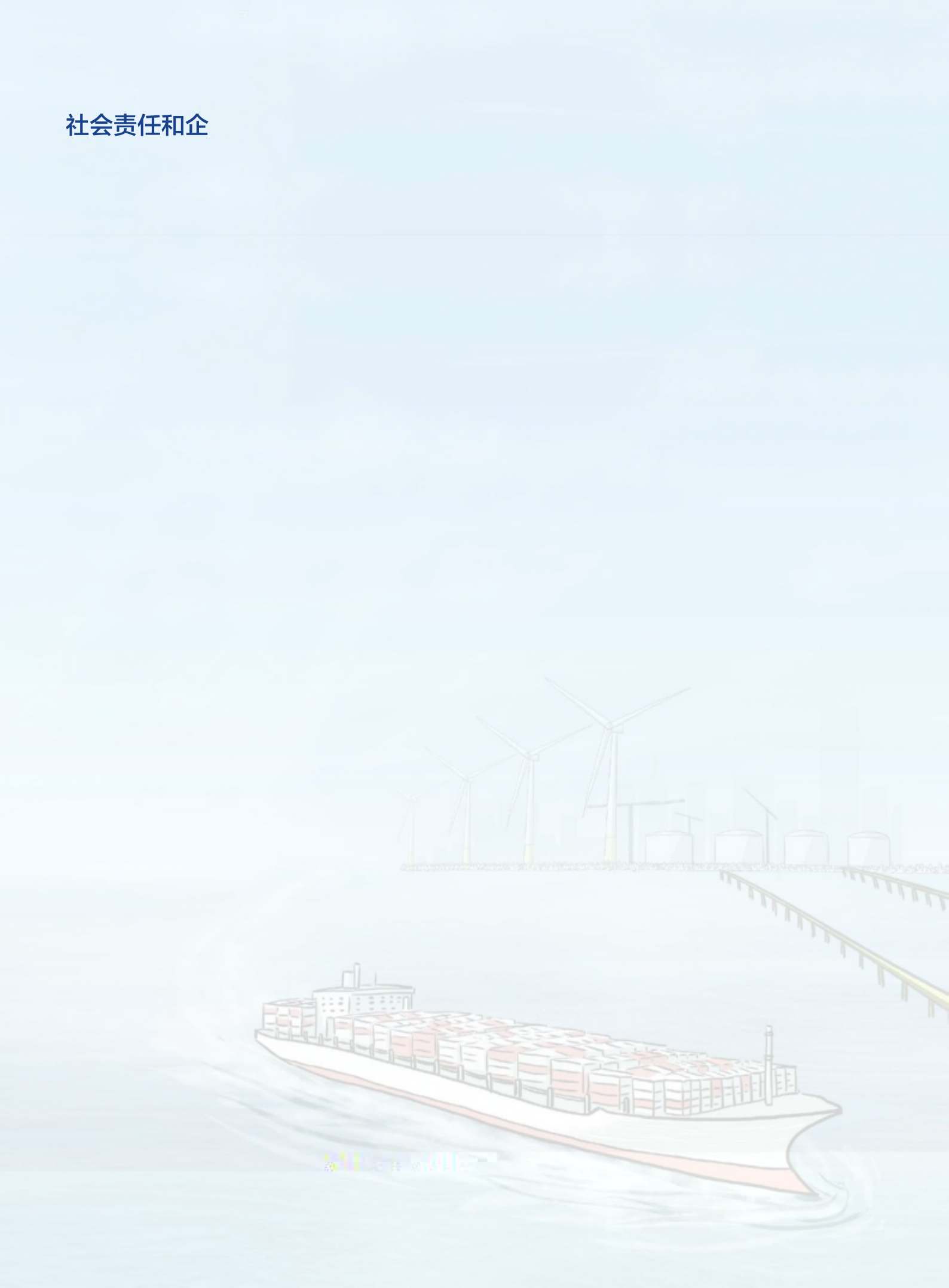


打造珠海港海向核心物流通道 提升





# 社会责任和企





)

(

**10**

**0.36**

**789,540,919**



.....	2
.....	7
.....	11
.....	13
.....	34
.....	54
.....	59
.....	60
.....	67
.....	73
.....	78
.....	206





---


			000507
			ZHUHAI PORT CO.,LTD.
			16 2001-2
			519050
			278
			519015
			<a href="http://www.0507.com.cn">http://www.0507.com.cn</a>
			<a href="mailto:zph916@163.com">zph916@163.com</a>

	278	278
	0756--3292216 3292215	0756--3292216 3292215
	0756--3321889	0756--3321889
	<a href="mailto:zph916@163.com">zph916@163.com</a>	<a href="mailto:zph916@163.com">zph916@163.com</a>

	<a href="http://www.cninfo.com.cn">http://www.cninfo.com.cn</a>


1

2

	393,037,947.12	452,611,401.06	449,935,479.97	565,051,595.50
	15,263,230.79	83,639,435.64	13,087,468.66	28,617,849.67
	13,113,595.53	82,416,464.95	13,630,222.66	17,714,768.30
	56,067,099.82	79,106,002.14	68,252,773.03	162,813,773.38

	2017	2016	2015	
	74,239.63	11,178,435.96	411,795.57	
	11,322,674.79	9,458,785.20	9,609,024.73	302.38

				560.10
				81.63
				-
				550.25
				-
	9,565,256.04	8,081,300.00		111.40
				246.07
	-1,102,130.42	-3,773,397.62	2,165,902.93	
	4,828,582.26	4,926,939.53	1,184,737.10	
	1,298,524.46	-600,634.26	67,108.54	
	13,732,933.32	20,618,818.27	10,934,877.59	--

1

1

1



2010

1

VMI

2

3

+

2017

1


---

--	--

2

2017

14.2%

6

10

,

	2017	173	27
2700	82	53	6

1	761,138,386.55	40.91%	650,283,760.26	36.10%	17.05%
2	968,505,484.62	52.05%	1,023,696,680.30	56.84%	-5.39%
3	130,992,552.48	7.04%	127,145,492.20	7.06%	3.03%
	77,328,423.09	4.16%	53,496,303.56	2.97%	44.55%
	349,407,372.21	18.78%	358,284,041.93	19.89%	-2.48%
	125,401,732.39	6.74%	138,378,140.31	7.68%	-9.38%
	416,367,956.93	22.38%	473,538,194.50	26.29%	-12.07%
	130,992,552.48	7.04%	127,145,492.20	7.06%	3.03%
	353,538,380.78	19.00%	308,531,722.06	17.13%	14.59%
	407,600,005.77	21.91%	341,752,038.20	18.98%	19.27%
	1,735,234,691.26	93.26%	1,662,747,792.45	92.32%	4.36%
	125,401,732.39	6.74%	138,378,140.31	7.68%	-9.38%

**2****10%**

1	761,138,386.55	499,443,026.34	34.38%	17.05%	21.46%	-2.39%
2	968,505,484.62	838,197,706.23	13.45%	-5.39%	-8.49%	2.93%
	349,407,372.21	334,116,473.55	4.38%	-2.48%	-4.02%	1.54%
	416,367,956.93	329,488,091.92	20.87%	-12.07%	-16.96%	4.65%
	353,538,380.78	197,205,270.17	44.22%	14.59%	18.14%	-1.68%
	407,600,005.77	302,237,756.17	25.85%	19.27%	23.74%	-2.68%
	1,735,234,691.26	1,287,180,331.43	25.82%	4.36%	1.97%	1.74%

1

3

			2017	2016	
			66,471.26	25,805	157.59%
			64,699.18	61,246.95	5.64%
			0		
			1,760.08	849.81	107.11%
			5,572.29	5,484.17	1.61%
			33	31.2	5.77%
			66	67.2	-1.79%
			26,960,569.59	22,759,873.3	18.46%
			0		
			157,654.85	59,698.15	164.09%
			470,598,700	394,305,385	19.35%
			484,533,800	407,120,478	19.01%
			0	0	

30%

行项目	单位	单位	2017年	2016年	增减幅度	增减原因
煤炭	吨	吨	66,471.26	25,805	157.59%	2017年煤炭采购量较2016年增加了40,666.26吨
柴油	升	升	1,760.08	849.81	107.11%	2017年柴油采购量较2016年增加了910.27升
天然气	立方米	立方米	157,654.85	59,698.15	164.09%	2017年天然气采购量较2016年增加了97,956.70立方米

4



1		120,270,269.93	6.46%
2		106,354,653.44	5.72%
3		82,839,832.57	4.45%
4		79,897,466.24	4.29%
5		71,040,434.95	3.82%
	--	460,402,657.13	24.74%

	489,513,760.66
	29.15%
	0.00%

5

1		180,986,065.85	10.78%
2		89,890,966.93	5.35%
3		82,838,159.51	4.93%
4		73,573,220.14	4.38%
5		62,225,348.24	3.71%
	--	489,513,760.66	29.15%

3

	2017	2016		
	83,388,176.11	78,681,737.65	5.98%	
	136,200,258.56	131,871,405.46	3.28%	
	111,052,955.05	102,422,157.43	8.43%	

4



5

	2017	2016	
	2,139,112,965.62	2,067,244,842.96	3.48%
	1,772,873,317.25	1,787,884,484.59	-0.84%
	366,239,648.37	279,360,358.37	31.10%
	124,104,151.59	126,617,035.77	-1.98%
	227,964,543.69	426,008,550.94	-46.49%
	-103,860,392.10	-299,391,515.17	65.31%
	541,900,006.12	1,472,513,493.02	-63.20%
	659,547,855.02	1,542,000,880.79	-57.23%
	-117,647,848.90	-69,487,387.77	-69.31%
	141,573,752.35	-89,513,068.72	258.16%

	2017	2016	
	366,239,648.37	279,360,358.37	31.10%
	227,964,543.69	426,008,550.94	-46.49%
	541,900,006.12	1,472,513,493.02	-63.20%
	659,547,855.02	1,542,000,880.79	-57.23%

76.

1

90,603,101.30	44.44%		
13,983,641.95	6.86%		
7,151,194.42	3.51%		
4,446,952.38	2.18%		

2017		2016			
456,864,129.45	7.72%	319,658,086.27	5.59%	2.13%	
355,115,098.67	6.00%	322,865,070.48	5.64%	0.36%	
74,008,805.79	1.25%	62,952,734.45	1.10%	0.15%	
164,043,934.55	2.77%	162,954,371.01	2.85%	-0.08%	
370,688,203.69					

	581,284,597.96	9.83%	558,090,888.48	9.76%	0.07%	
--	----------------	-------	----------------	-------	-------	--

2

3

		5,832,355.01
		80,127,806.36
		160,106,376.42
		199,533,513.39
		11,274,597.35
		6,399,707.60
		9,168,319.33
		472,442,675.46

1

-1

2

-45

3

-19

1

	128,160,300.00	343,917,216.22
		-62.74%

2

3

4

1

2

5

1

2016		60,000	1,238.83	60,044.98	0	0	0.00%	0		0
	--	60,000	1,238.83	60,044.98	0	0	0.00%	0	--	0

3

1

2

10%

			480,000,000.	936,667,764.	835,792,278.	1,126,357.10	70,862,144.0	72,389,672.6
			00	99	02		2	7
			496,275,000.	911,222,799.	589,469,877.	43,546,186.3	10,610,729.0	7,641,669.37
			00	58	27	3	3	
			94,300,000.0	384,011,171.	120,966,975.	117,788,996.	18,646,389.1	17,147,203.0
			0	88	06	43	0	8

10,000,000.0 23,734,542.9 19,982,656.8 20,645,162.7  
0 6 5 7

			12,000,000.00	63,985,711.56	25,221,581.95	65,708,280.00	4,371,167.25	3,044,552.74
			50,000,000.00	151,869,314.67	114,882,635.77	78,364,029.36	27,036,051.33	20,108,317.56
			107,640,000.00	233,964,516.27	98,960,081.85	7,210,425.52	-8,385,335.39	-8,249,598.58
			300,000,000.00	380,239,239.16	254,179,707.00	68,837,693.39	17,214,098.32	15,513,325.53
			50,000,000.00	9,147,823.32	9,023,621.22		12,504.20	8,362.36

2015

12 31

2014

		3	30,000,000.00	160,971,966.35	43,243,852.42	37,519,375.49	2,942,085.18	3,005,018.00
			10,000,000.00	64,155,342.96	53,015,040.38	34,833,210.85	6,357,516.87	5,454,861.63
			50,000,000.00	100,454,374.29	95,332,477.71	16,538,550.44	10,277,049.46	7,610,083.31
			3,000,000.00	20,539,839.69	11,114,917.13	29,012,858.65	3,270,811.40	2,199,564.86
			50,000,000.00	221,532,578.15	73,464,173.74	21,110,235.78	1,857,664.27	799,047.04
			300,000,000.00	912,609,038.13	892,753,121.29	5,999,865.37	55,747,895.70	55,747,895.70

161,467,939. 249,167,613.

83

28

			150,000,000.	433,386,272.	162,705,595.	41,158,002.7		
			00	46	63	0	8,139,793.68	8,802,114.77

381,119,720. 120,746,094. 56,451,104.3 49,052,186.1  
 38 ■ 10 9 2



			117,510,000.00	244,950,250.61	80,213,937.96	202,561,212.52	15,593,058.26	11,637,868.50
			529,012,400.00	747,171,640.74	480,308,310.62	140,878,564.29	27,565,061.58	27,152,823.96
		LNG	55,000,000.00	151,478,980.00	61,489,026.95	42,051,994.78	8,232,572.66	5,895,233.69
( )		PTA	488,000,000	7,289,942,554.04	-482,016,987.60	12,071,502,161.32	-196,125,471.80	-719,038,392.59
			500,000,000.00	3,587,290,090.65	3,577,186,869.78	9,507,932.99	718,368,783.66	714,805,086.32

		1.73
		-0.71

1

2017 464 30% 23 40%

2

3# 4#

3 5.86 45 2017  
30%

4 1687 27.13%

4

15

1 122%

5 2017 7607 , 7394 2017 98% 2017

2017 22095 21683 95%

2017 7902 , 7767  
2017

98%

10428 98% 2017 10849

6

173 156

6

2018

**1**

**2**

**3**

4

OCR

1

2

3

, , ,

6

4

LNG

5

**6**

**1**

**2**

**3**

**4**

**5**

**1**

2017 02 16			
2017 04 13			2016
2017 04 13			2016 2016
2017 04 28			"2017 "
2017 05 11			
2017 07 12			
2017 08 29			2017 2017

---

			7
			20
			0
			0

3

2017-2019

2017 12 4

2018 1 19 2018

2017 12 6 2018

1 20

<http://www.cninfo.com.cn>

2017-066 2017-072

2017-074 2018-003


3

2015 0.2	789,540,919	10
2016 0.2	789,540,919	10
2017 0.36	789,540,919	10



2017	28,423,473.08	140,607,984.76	20.21%		
2016	15,790,818.38	104,219,213.74	15.15%		
2015	15,790,818.38	78,624,206.45	20.08%		

10		0	
10		0.36	
10		0	
		789,540,919	
		28,423,473.08	
		411,214,333.01	
		100%	
	2017	695,657.74	69,565.77
2016	15,790,707.02	426,378,948.06	2017
411,214,333.01	2017		789,540,919
10	0.36	28,423,473.08	382,790,859.92

1

				2016 05	

				12		,
						2016
						12
						2017
						12,577.2
						-3,090.35

2017

1

2017 12  
062017 12  
6

2

[http://www.cn  
info.com.cn](http://www.cninfo.com.cn)

2017-064

			3			
			2017			
			1	2017 12 06		2017 12 6 <a href="http://www.cn">http://www.cn</a>

			2			info.com.cn
			3			2017-064
			4			
			5			
			6			

				2015 09 28	2019 1 29	2016 1 29
			2017 4 12 3	2017 04 12	2017 7 12	2017 7 12
			2017 4 12	2017 04 12	2017 7 12	2017 7 12

---

			3			

2

33.

4.

---

	110
	7
	2

2017

32

2017

32

2016





1 23 2017 2017 2017

2 2017 1 22

23 2017 1

3 2017 4 27 91440400MA4W7HXJ39

2017 4 28 1000

4 2017 8 25

29 2500 950 2017 8

5



1

1

2017

100%

10

2017 12 6

2017-067

10%

10%

2

3

2015 4 1

2015-014

2015 2 17

22,875

6

10%

10%

2

1

	2017 09 21	2017 09 30	16,350		2017/9/30-20 29/9/30				
	2014 06 07	2014 08 27	33,333.34		2014/8/27-20 24/8/27				
	2016 07 26	2016 10 13	0		2016/10/13-2 027/10/13				
	2008 04 09								
A1		19,800	A2		16,800				
A3		59,800	A4		49,683.34				

B1		4,000		B2		1,539	
B3		76,755		B4		54,525.46	
	2012 02 22	1,818	2012 03 20	234		2012/3/20-20 24/3/20	
	2012 02 22	18,182	2012 03 20	8,917.12		2012/3/20-20 24/3/20	
	2016 05 24	3,100	2017				

3

1

			76,000	0
			76,000	0

			3,500		2016 11 22	2017 04 22			3.25%	47.71	47.71						
			2,000		2016 11 17	2017 02 17			2.75%	14.06	14.06						
			1,500		2017 02 21	2017 04 25			4.10%	10.76	10.76						
			1,000		2017 03 23	2017 04 24			4.30%	3.77	3.77						
			4,000		2017 03 24	2017 06 02			4.30%	33.44	33.44						
			5,000		2017 04	2017 06			4.20%	25.08	25.08						

				19	01												
			1,000	2017 05 02	2017 06 02			4.30%	3.65	3.65							
			4,000	2017 05 10	2017 05 25			3.20%	5.26	5.26							
			5,000	2017 06 07	2017 07 07			4.46%	18.33	18.33							
			2,000	2017 06 27	2017 07 27			4.60%	7.56	7.56							
			14,000	2017 07 10	2017 08 09			4.20%	49.94	49.94							
			2,000	2017 07 28	2017 09 02			4.20%	8.4	8.4							
			14,000	2017 08 11	2017 09 10			4.35%	50.75	50.75							
			2,000	2017 09 07	2017 10 09			4.40%	7.72	7.72							
			15,000	2017 09 15	2017 10 15			4.45%	55.63	55.63							
			76,000	--	--	--	--	--	342.06	342.06	--		--	--	--		

2

4

1

2017  
Ä 1795 111,805 Ö

9

2

1

2016 12 29

2016-2018  
200

100  
2017 200

2

2017

89.5

85



4  
5  
6  
7  
8  
9  
10

60%

1

2018

45%

**2018**

1  
2  
3  
4  
5  
6  
7  
8  
9  
10  
11  
12  
13  
14  
15

60%

1

2017

45%

**3**

2018

91440101MA5AL7X33W ( 1.25 5000 40%

2 2016 11 24 2016 12  
 12 2016 6

2016 11 25

[2017]CP139  
 2017 8 29

3 2017 8 13 14

2017 8 30

390 156

4 2017 12 4 2018 1  
 19 2018

157,908,183 157,908,183 20% 148,060.00  
 2017 12 6 2018 1 20

2017-060 2017-061 2017-074 2018-003

1 2017 7 7 670

10.8055%

2017 12 29 2,674.05  
 35% 2017 12 30

2 2017 10 13

3# 6# 4 1000 3# 4#  
 8000 5 6# 7000  
 3# 4#

---

3            2017   11   17

100%

100

100

4            2017   11   17

100%

2017   9   (   30  
100%

5            2017   12   4

2017   12   6

6            2016   6   20

4.12%

**1**

	17,397,141	2.20%					0	17,397,141	2.20%
1	0	0.00%					0	0	0.00%
2	0	0.00%					0	0	0.00%
3	17,397,141	2.20%					0	17,397,141	2.20%
	17,380,440	2.20%					0	17,380,440	2.20%
	16,701	0.00%					0	16,701	0.00%
4	0	0.00%					0	0	0.00%
	0	0.00%							





10	2,515,681
	4

10

10

10

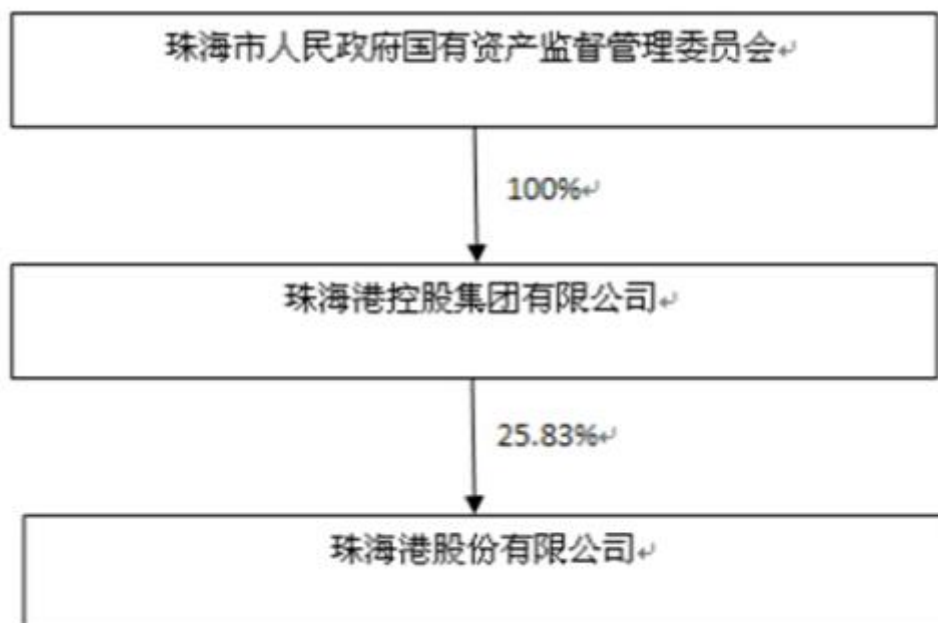
10

**2**

	/			
		2008 12 19	91440400682470519E	

**3**

	/			
		2004 12 29	11440400719245578R	



4            10%

5





				47	2012 05 15	2018 07 27	0	0	0	0	0	0
				54	2012 05 15	2018 07 27	22,269	0	0	0	0	22,269
				56	2012 05 15	2018 07 27	0	0	0	0	0	0
				36	2014 07 25	2018 07 27	0	0	0	0	0	0
				54	2016 10 13	2018 07 27	0	0	0	0	0	0
				62	2014 12 22	2018 07 27	0	0	0	0	0	0
				50	2015 07 27	2018 07 27	0	0	0	0	0	0
				54	2016 07 04	2018 07 27	0	0	0	0	0	0
				59	2012 05 15	2018 07 27	0	0	0	0	0	0
				33	2015 07 27	2018 07 27	0	0	0	0	0	0
				32	2017	2018	0	0	0	0	0	0



<b>1</b>									
		47							2007 1
2012 1						2010 9			
		2007 2							
		2011 7	2013 6						2011 7
2015 2						2013 6			
						2013 6			
		54						1993	2012 5
					(2010 9			)	2007 1
2015 2						(		)	2012
4						2013 7			
2015 2									
		56						2007 1	
					(2010 9			)	2007 2
					(			)	
		36						2011 10	2013 9
						2013 9		2013 12	
		2013 12							2013
6									
						2013 7			
		54						2010	2015
								2015 5	
									2016 10
<b>2</b>									
		62						2005 7	
		2005 11						2005 10	2012
5									
		50						1998 1	
		54						2001	
<b>3</b>									
		59						2011 5	2012 5
			2012 5					2012 11	
					2012 5				
		33				2007 8		2012 3	
		2012 3							
		32						2010 7	2012 2

2012 2    2014 2

2014 3    2015 5

2015 6    2017 2

2017 7

2017 3

2015 6

2017 7

**4**

44

(2010 9

2000 4

)

2011 10

45

2010 1    2011 10

2011 10

44

2001 10    2005 11

2005 11    2011 4

2011 4

2014 1    2017 2

2011

5    2013 8

2015 7    2016 5

2017 2

			2011 07 01		
			2013 06 01		
			2012 11 21		

---

			2008 09 01		

1

2

3

--	--	--	--	--

			44		37.2	
			60		0	
			48		13.12	
			52		28.67	
	--	--	--	--	347.31	--

**1**

	56
	2,046
	2,102
	2,102
	105
	1,081
	436
	147
	95
	343
	2,102
	2
	52
	417
	499
	301
	831
	2,102





1

2

3

4

5

6

4

80

**1**

2017		0.42%	2017 02 15	2017 02 16	2017-009
2017		26.34%	2017 03 17	2017 03 18	2017-016
2016		26.19%	2017 05 23	2017 05 24	2017-032
2017		0.27%	2017 09 21	2017 09 22	2017-056

**2**

**1**

	17	3	14	0	0		1
	17	3	14	0	0		1
	17	3	14	0	0		1

**2****3**

2017

6

3# 6#

2017 8

3# 6#

2016

2017

**1**

**2**



**2018**



---

2017 12 31	
	2018 03 20
	2018 3 20 2017

2011	11	112025	2011 03 01	2019 02 28	50,000	6.80%	
2016	16	112479	2016 11 22	2021 11 21	60,000	3.73%	
		11 16					
		11	2017 3 1	2016 3 1	2017 2 28		
		16	2017 11 22	2016 11 22	2017 11 21		
		11					
				5			
					5		
							3

	0	0
	16	2016
	5	3

	11		11		11		11
	16		4036		16		0755-82404851
	16		16-20		16		16
	16		16		16		020-23385013
	16		5		16		16
	16		10		16		16
	11	16		760		8	

	11	5
	2011	3 14
	16	494,441,234.82
	16	2011
	16	6
	11	28
	16	2016
	11	28
	16	449,829.23
	16	3,166,829.23
	16	2017 12 31
	16	591,283,000.00
	16	0





2016	2017 6 21	2018 6 30	2016
	2017		

4

11

1

351,940

2008 12 19

16

24 2401

2

2017 1-9

	2017 9 30 /2017 1-9
	220.70
	131.84
	88.86
	29.37
	0.30
	3.86

(3)

	2018 03 16
	[2018] ZC10086

2017

2017 12 31

2017 12 31

2017

--	--

30%	2 3 4 5 6
186,063.64	2017 1 2 3 4 5 6 7

1

2

3

4

5

6

**1**

2017 12 31

	456,864,129.45	319,658,086.27

	18,065,724.03	
	53,020,226.90	60,898,909.01
	74,008,805.79	62,952,734.45
	22,001,646.55	75,056,939.21
	1,040,335,390.77	885,771,973.10
	1,369,694,098.98	1,387,671,134.33
	370,688,203.69	307,779,207.55
	164,043,934.55	162,954,371.01
	2,533,735,092.88	2,534,338,240.64
	100,649,215.90	116,677,285.75
	18,868.73	26,514.77
	224,809,755.19	214,362,836.63
	35,072,489.35	35,072,489.35
	11,513,128.50	11,476,579.05
	33,607,183.94	32,705,249.42
	31,033,370.57	32,179,574.90
	4,874,865,342.28	4,835,243,483.40
	5,915,200,733.05	5,721,015,456.50
	234,000,000.00	267,500,000.00



	44,100,000.00	23,009,097.25
	175,484,933.21	177,832,985.34
	59,001,361.31	37,617,645.51
	50,088,849.81	46,415,284.60
	28,884,970.05	29,651,865.32
	32,259,545.05	31,858,481.36

	2,825,175,506.37	2,803,512,619.53
	789,540,919.00	789,540,919.00
	788,968,378.24	788,968,372.12
	1,638.33	1,447.70
	2,153,349.55	1,056,462.64
	139,903,259.43	139,833,693.66
	1,022,055,474.17	897,307,762.20
	2,742,623,018.72	2,616,708,657.32
	347,402,207.96	300,794,179.65
	3,090,025,226.68	2,917,502,836.97
	5,915,200,733.05	5,721,015,456.50

2

	189,793,304.82	87,224,177.80
	31,628,134.95	44,173,234.10
	477,462,248.36	613,645,022.11

	844,345.79	613,721.64
	699,728,033.92	745,656,155.65
	874,950,227.39	892,927,262.74
		26,566,646.03
	2,145,527,667.71	1,995,871,998.70
	3,104,639.78	3,496,927.64
	1,435,816.59	698,695.21
	828,000.00	1,104,000.00
		831,386.18
	3,025,846,351.47	2,921,496,916.50
	3,725,574,385.39	3,667,153,072.15
	130,000,000.00	200,000,000.00
		6,600.00
	6,300,000.00	8,030,000.00
	528,185.43	606,542.50



3

	1,860,636,423.65	1,801,125,932.76
	1,860,636,423.65	1,801,125,932.76
	1,772,782,240.35	1,745,386,783.47
	1,411,117,295.69	1,397,633,949.80
	17,039,912.99	16,529,024.65
	83,388,176.11	78,681,737.65
	136,200,258.56	131,871,405.46
	111,052,955.05	102,422,157.43
	13,983,641.95	18,248,508.48
	90,603,101.30	85,133,141.45
	25,116,563.15	29,691,766.54
-		
-	-74,468.53	-2,810,844.62
	22,767,544.39	
	201,150,360.46	

---

	203,854,602.50	152,092,252.59
	37,982,664.79	31,869,011.99
	165,871,937.71	120,223,240.60
	165,871,937.71	120,223,240.60
	140,607,984.76	104,219,213.74
	25,263,952.95	16,004,026.86

	0.1781	0.1320
	0.1781	0.1320
	0.00	0.00

4

	9,729,504.22	11,875,310.16
	3,653,200.00	5,102,155.46
	94,187.04	312,174.03
	22,411,246.73	23,495,653.72
	51,835,631.93	46,625,560.19
	18,038,901.88	37,328.48
	89,003,135.31	5,808,311.49
	6,350,433.56	1,866,185.48
	-	3,283.05
	27,224.15	
	2,726,696.10	-57,885,967.18
	16.95	92,220.31
	2,031,055.31	2,029,807.10
	695,657.74	-59,823,553.97
	695,657.74	-59,823,553.97
	695,657.74	-59,823,553.97

1.		
2.		
1.		
2.		
3.		
4.		
5.		
6.		
	695,657.74	-59,823,553.97

5

	2,022,774,387.19	1,951,453,010.36



	33,386,519.64	28,461,736.59
	82,952,058.79	87,330,096.01
	2,139,112,965.62	2,067,244,842.96
	1,272,495,574.85	1,308,324,071.01
	227,696,358.76	207,189,984.77
	119,362,891.87	95,899,445.02
	153,318,491.77	176,470,983.79
	1,772,873,317.25	1,787,884,484.59
	366,239,648.37	279,360,358.37
	67,391,052.33	47,077,270.81
	461,399.75	228,476.57
		25,812,524.00
	56,251,699.51	53,498,764.39
	124,104,151.59	126,617,035.77
	170,952,602.62	275,114,142.92
	56,700,000.00	33,817,216.22



	1,768,090,998.53	1,719,965,042.95
	18,791,527.59	18,524,384.68
	263,809.42	434,110.41
	1,643,060,718.37	1,727,516,905.02
	1,662,116,055.38	1,746,475,400.11
	105,974,943.15	-26,510,357.16
	97,102,315.08	142,939,770.42
		4,530.00
	1,042,679,167.55	173,039,829.14
	1,139,781,482.63	315,984,129.56
	42,225.01	1,419,489.00
	95,060,300.00	112,052,016.22
	50,149,449.63	
	844,100,000.00	460,174,112.98
	989,351,974.64	573,645,618.20
	150,429,507.99	-257,661,488.64
	280,000,000.00	670,000,000.00
		594,000,000.00
	6.12	352,993.02
	280,000,006.12	1,264,352,993.02
	350,000,000.00	955,578,000.00
	82,475,330.24	73,122,825.11
	1,360,000.00	1,850,000.00
	433,835,330.24	1,030,550,825.11

	-153,835,324.12	233,802,167.91
	102,569,127.02	-50,369,677.89
	87,224,177.80	137,593,855.69
	189,793,304.82	87,224,177.80

7

	789,540,919.00				788,968,372.12		1,447.70	1,056,462.64	139,833,693.66		897,307,762.20	300,794,179.65	2,917,502,836.97

2													
3													
4													
									69,565.		-15,860,	-5,179,7	-20,970,
									77		272.79	42.42	449.44
1									69,565.				
									77				



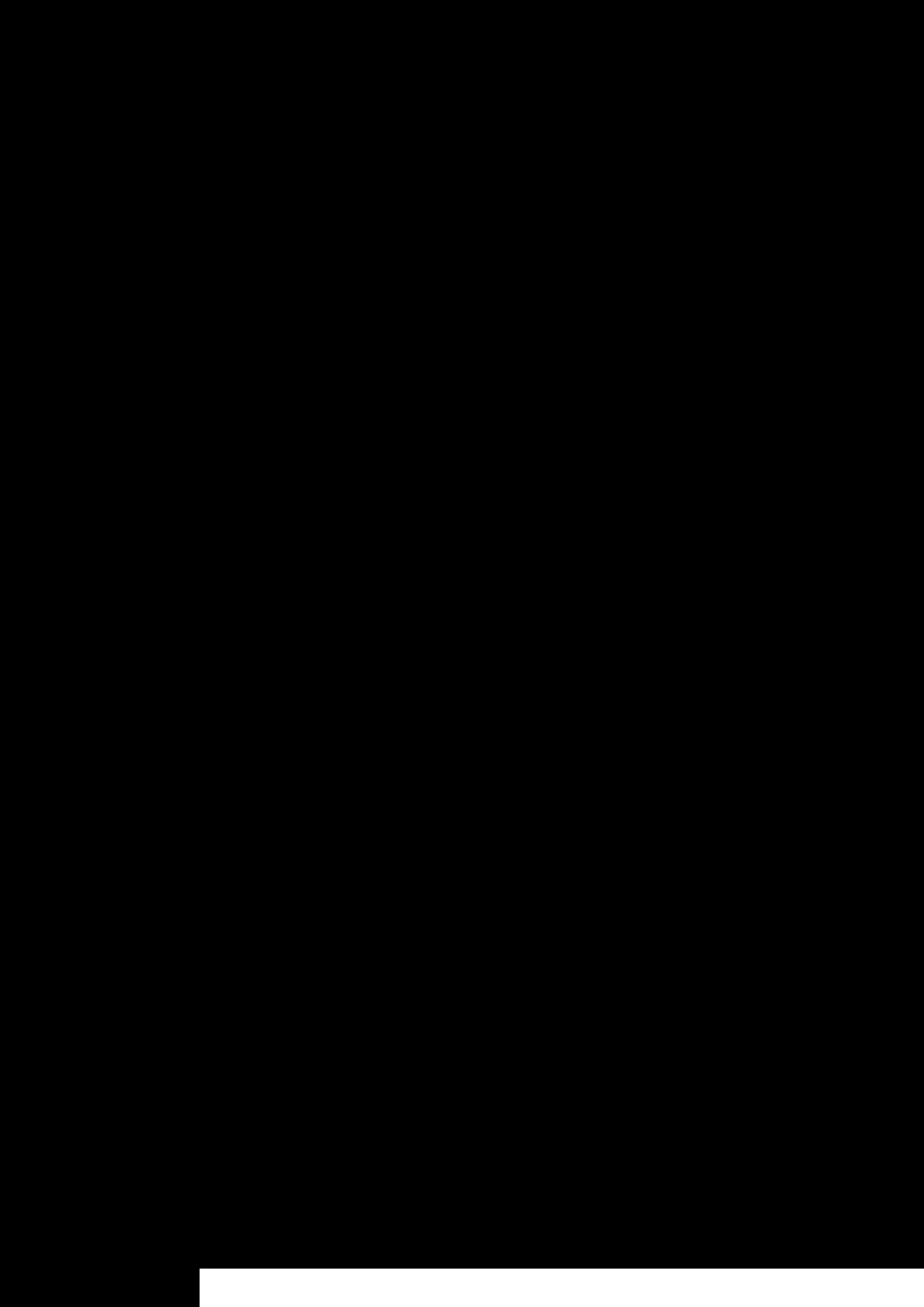
											818.38	772.27	590.65
4												-1,649, 284.91	-1,649,2 84.91
					-2,868,8 49.32							2,868,8 49.32	
1													
2													
3													
4					-2,868,8 49.32							2,868,8 49.32	
								1,054,9 06.55				532,428 .28	1,587,3 34.83
1								4,088,2 11.42				740,092 .06	4,828,3 03.48
2								-3,033,3 04.87				-207,66 3.78	-3,240,9 68.65
	789,54 0,919. 00				788,968 ,372.12	1,447.7 0	1,056,4 62.64	139,833 ,693.66			897,307 ,762.20	300,794 ,179.65	2,917,5 02,836. 97

8

	789,540, 919.00				629,359,0 48.71						123,778,4 58.59	426,378 ,948.06	1,969,057 ,374.36

	789,540, 919.00				629,359,0 48.71				123,778,4 58.59	426,378 ,948.06	1,969,057 ,374.36
					6.12				69,565.77	-15,164, 615.05	-15,095,0 43.16
										695,657 .74	695,657.7 4
					6.12						6.12
1					6.12						6.12
2											
3											
4											
									69,565.77	-15,860, 272.79	-15,790,7 07.02
1									69,565.77	-69,565. 77	











**1**

**2**

1 1 12 31

**3**

12

**4**

**5**

**6**

1.

2.

1

2

3

4

**7**

- 1
- 2
- 3
- 4
- 5

14

**8**

**9**

1.

2.

**10**

**1.**

**2.**

1

2

3



4

5

**3.**

1  
2

1  
2

**4.**

**5.**

**6.**

1

30%

2

**11****1**

	1,000
	500

**2**

1	
2	
3-	
4-	

--	--	--

---

1	1	3.00%	3.00%
1	2	10.00%	10.00%
2	3	30.00%	30.00%
3		50.00%	50.00%

**3**


**12**

1

2

3

4

5

1

2

**13**

1

2

**14**

1

2

1

2

3

15

16

1

1

2

2

		20-40	5%	2.38%-4.75%
		4-15	5%	6.33%-23.75%

---

		5-6	5%	15.83%-19%
		3-5	5%	19%-31.67%
		30-50	5%	1.9%-3.17%
		10-20	5%	4.75%-9.5%
		10-30	5%	3.17%-9.5%
		30-50	5%	1.9%-3.17%

3

1

2

3

4

17

18

1

2

3

3

**19**

**20**

**21**

**1**

**1.**

1



2

**2.**

1

2

3

4

5

6

7

**3.**

**2**

**1.**

**2.**

1

2

3

4

5

22

23

1.

2.

24

1

2

1

2

/

/

3

4

25

1.

- 1
- 2
- 3

**2.**

**26**

**27**

**28**

- 1
- 2
- 3
- 4
- 5

1

1  
2  
3  
4

1  
2

**29**

**1**

**2**

a.

b.

**30**

/

**31**

**1**

1

2

2

1

2

3

1

2

32

1

2

3

2012 16

1.5%

1%

33

1

1	" "	
" "	"	165,871,937.71 0.00
2		22,767,944.39
3	" "	
	" "	



34

1

		17% 11% 6% 3% 5%
		7% 1%
		25%
		3%
		2%

2

1 [2015]74

50%

2 [2007] 512

[2008] 46  
2008 1 1

[2008]116

2015  
2015 1 1 2017 12 31

2011 58  
2012 12

10% 15%

2011 1 1 2020 12 31 2012 1

1 2020 12 31

5

2015 34 2015 1 1 2017 12 31 20

20 50% 20%

**3****1**

	449,292.87	563,880.46
	450,567,218.36	308,891,336.83
	5,847,618.22	10,202,868.98
	456,864,129.45	319,658,086.27
	22,101.20	23,095.33

	2,125,446.23	2,301,062.04
	748,848.24	2,747,303.44
	2,796,279.31	5,151,698.70
	160,953.68	
	827.55	
	5,832,355.01	10,200,064.18

2

3

4

1

	25,528,440.42	15,220,000.00
	25,528,440.42	15,220,000.00

2

3

	3,586,614.78	
	3,586,614.78	

4

5

1

	39,224,913.03	10.02%	11,767,473.91	30.00%	27,457,439.12	42,515,978.03	11.99%	4,251,597.80	10.00%	38,264,380.23
	337,240,637.37	86.14%	13,623,901.95	4.04%	323,616,735.42	290,547,668.79	81.92%	10,556,828.42	3.63%	279,990,840.37

	15,037,6 73.57	3.84%	10,996,7
---	-------------------	-------	----------

2

11,689,407.58

7,084,555.19

	5,502,459.84	
	1,113,955.88	
	212,922.03	
	255,217.44	
	7,084,555.19	

5

6

6

1

1	34,617,851.03	96.88%	27,714,719.73	95.17%
1 2	846,483.03	2.37%	525,326.98	1.80%
2 3	266,984.85	0.75%	412,104.76	1.42%
3	0.05	0.00%	468,082.21	1.61%

7

1

2

8

1

( )	
	10,465,724.03
	7,600,000.00
	18,065,724.03

2

1

9

1

	72,703,048.60	59.67%	51,759,829.96	71.19%	20,943,218.64	60,903,048.60	43.22%	53,520,946.05	87.88%	7,382,102.55
	34,288,005.71	28.14%	2,210,997.45	6.45%	32,077,008.26	63,250,712.27	44.88%	9,733,905.81	15.39%	53,516,806.46
	14,852,145.83	12.19%	14,852,145.83	100.00%		16,777,482.86	11.90%	16,777,482.86	100.00%	
	121,843,200.14	100.00%	68,822,973.24	56.48%	53,020,226.90	140,931,243.73	100.00%	80,032,334.72	56.79%	60,898,909.01

	20,509,376.12	20,509,376.12	100.00%	
	24,607,008.50	14,764,205.10	60.00%	
	15,786,663.98	15,786,663.98	100.00%	
	11,800,000.00	699,584.76	5.93%	
	72,703,048.60	51,759,829.96	--	--

1				
1	9,050,170.35	267,937.93	3.00%	
1 2	1,965,577.23	196,557.73	10.00%	
2 3	3,930,850.22	1,181,513.83	30.00%	
3	1,127,359.09	564,987.96	50.00%	
	16,073,956.89	2,210,997.45	13.76%	

			%
	18,214,048.82		
	18,214,048.82		



2

0.00

9,268,969.09

	2,460,700.85	
	2,460,700.85	--

3

	1,940,392.39

4

	17,409,866.16	13,708,764.13
	12,059,788.20	19,254,791.17
		10,599,591.83
	22,256,248.97	25,886,663.98
	804,182.66	1,753,762.78
	45,116,384.62	45,116,384.62
	24,196,729.53	24,611,285.22

		15,786,663.98	3	12.96%	15,786,663.98
		11,800,000.00	3	9.68%	699,584.76
		4,400,283.00	1	3.61%	
	--	77,103,331.60	--	63.28%	51,759,829.96

6

7

8

10

1

	35,239,455.44		35,239,455.44	28,746,427.21	119,133.91	28,627,293.30
	18,134,005.24		18,134,005.24	16,466,862.07	368,427.86	16,098,434.21
	1,274,200.72	160,443.46	1,113,757.26	1,885,402.92	401,113.63	1,484,289.29
	19,274,216.75	248,223.30	19,025,993.45	15,949,848.12		15,949,848.12
	28,403.68		28,403.68	140,672.48		140,672.48
	467,190.72		467,190.72	652,197.05		652,197.05
	74,417,472.55	408,666.76	74,008,805.79	63,841,409.85	888,675.40	62,952,734.45

4

2


	119,133.91			119,133.91		
	368,427.86			368,427.86		
	401,113.63			240,670.17		160,443.46
		248,223.30				248,223.30
	888,675.40	248,223.30		728,231.94		408,666.76

3

4

	48,485,148.20
	16,658,608.43
	248,223.30
	45,869,539.88
	19,025,993.45

11

12

13

	1,548,107.93	989,872.37
	20,441,476.39	19,049,962.69
	12,005.41	16,361.06
		55,000,000.00
	56.82	743.09
	22,001,646.55	75,056,939.21

14

1

	1,400,192,134. 33	30,498,035.35	1,369,694,098. 98	1,400,192,134.3 3	12,521,000.00	1,387,671,134.33
	1,400,192,134. 33	30,498,035.35	1,369,694,098. 98	1,400,192,134.3 3	12,521,000.00	1,387,671,134.33
	1,400,192,134. 33	30,498,035.35	1,369,694,098. 98	1,400,192,134.3 3	12,521,000.00	1,387,671,134.33

2

3

	523,477,03 5.35				523,477,03 5.35				17,977,035 .35	17,977,035 .35	15.00%

	00			00	00			00		
	3,446,000. 00			3,446,000. 00	3,446,000. 00			3,446,000. 00		
	190,442,90 0.00			190,442,90 0.00					4.12%	00
	41,746,915 .23			41,746,915 .23					3.00%	

2015

2

25%

15

1

2

3

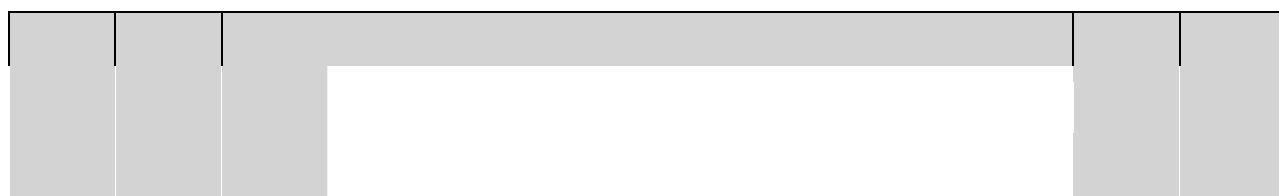
16

1

2

3

17



	1.70			.98					5.68	
	24,116,12 6.86			2,358,093 .49			1,904,514 .18		24,569,70 6.17	
		50,000,00 0.00							50,000,00 0.00	
	214,385,6 93.02			12,218,77 0.78			10,465,72 4.03		216,138,7 39.77	
		7,762,671 .20		190,850.0 3					7,953,521 .23	
	17,431,44 2.37			6,356,508 .78			7,600,000 .00		16,187,95 1.15	
	307,779,2 07.55	57,762,67 1.20		25,116,56 3.15			19,970,23 8.21		370,688,2 03.69	
	307,779,2 07.55	57,762,67 1.20		25,116,56 3.15			19,970,23 8.21		370,688,2 03.69	

22,875

6

2015 4 1

18

1





1.

164,043,934.55

---

4.										

1.	558,568,895 .37	67,498,999. 28	18,310,210. 17	1,246,681,4 20.32	335,661,538 .87	22,558,672. 64	106,762,945 .88	177,692,410 .35	2,533,735,0 92.88
2.	548,805,228 .56	53,832,352. 02	24,414,495. 44	1,332,862,6 67.53	316,647,649 .73	18,903,066. 02	112,190,955 .26	126,681,826 .08	2,534,338,2 40.64

2

3

	226,408,061.15	66,301,684.73	160,106,376.42
	226,408,061.15	66,301,684.73	160,106,376.42

4

5

	3,776,866.54

15,700,481.78

20

1

				1,422,755.52		1,422,755.52
	3,695,167.13		3,695,167.13	721,636.15		721,636.15
	11,013,315.90	11,013,315.90		11,013,315.90	11,013,315.90	
	24,341,634.22		24,341,634.22	56,477,077.93		56,477,077.93
	35,425,140.95		35,425,140.95	36,263,125.90		36,263,125.90
	15,657,223.31		15,657,223.31	9,073,058.86		9,073,058.86
	12,478,765.22		12,478,765.22	9,572,672.16		9,572,672.16

	198,870,000.00	9,073,058.86	17,522,501.11	10,938,336.66		15,657,223.31	28.97%		2,023,866.46	546,146.40	4.58%	
	19,000,000.00	9,572,672.16	2,906,093.06			12,478,765.22	67.00%					
	1,246,150,000.00	111,385,934.85	80,633,292.20	104,116,463.35		87,902,763.70	--	--	20,526,171.73	3,089,529.21		--

3

	422,500.00	
	422,500.00	--

21

22

	243.00	5,854.95
		500.00
	10,516.75	
	8,108.98	20,159.82
	18,868.73	26,514.77

23

1

2

24

25

1

1.	250,573,449.77		39,000.00	16,780,000.00	9,573,573.27	276,966,023.04
2.	16,578,460.85	49,999.99			1,917,465.45	18,545,926.29
1	16,578,460.85	49,999.99			1,917,465.45	18,545,926.29
2						
3						
3.						
1						
4.	267,151,910.62	49,999.99	39,000.00	16,780,000.00	11,491,038.72	295,511,949.33
1.	39,920,044.12		39,000.00	16,780,000.00	5,864,142.29	62,603,186.41
2.	6,842,017.05	2,639.15			1,254,351.53	8,099,007.73
1	6,842,017.05	2,639.15			1,254,351.53	8,099,007.73
3.						
1						



2

1	2008	1	875.00		310.68
				564	
2	2013	11			995
			458.94		
			536.06		
3	2016	8			13,943.13
			16,350		2,406.87

28

	2,580,232.37	533,275.97	793,350.80		2,320,157.54
	1,441,500.00		309,750.00		1,131,750.00
	2,493,543.62		181,549.27		2,311,994.35



	40,061,829.89	10,015,457.43	36,491,993.68	9,122,998.42
	11,615,870.06	2,903,967.52	11,066,600.00	2,766,650.00
	41,305,503.00	9,809,268.48	44,845,195.21	10,114,080.31
			1,631,483.07	244,722.46
			3,730,728.96	932,682.24
	20,495.97	2,049.60		
	142,301,822.49	33,607,183.94	137,352,353.45	32,705,249.42

2

	5,802,712.73	1,450,678.18	6,565,492.47	1,579,973.89
	30,139,092.39	6,434,894.55	33,028,127.67	7,156,660.79
	976,174.68	244,043.67	1,672,688.79	376,355.18
	36,917,979.80	8,129,616.40	41,266,308.93	9,112,989.86

3

		33,607,183.94		32,705,249.42
		8,129,616.40		9,112,989.86

4

5

30

	14,986,142.22	8,793,458.81
	16,047,228.35	22,300,807.15
		1,085,308.94
	31,033,370.57	32,179,574.90

31

1

	234,000,000.00	267,500,000.00
	234,000,000.00	267,500,000.00

2

32

33

34

	22,000,000.00	
	22,100,000.00	23,009,097.25
	44,100,000.00	23,009,097.25

0.00

35

1

1	1	134,933,576.81
1		40,551,356.40
		175,484,933.21
		142,558,658.91
		35,274,326.43
		177,832,985.34

2

1

		7,550,000.00
		9,177,000.00
		1,850,000.00
		18,577,000.00
		--

36

1

--	--	--

---

	101,136,446.47

1

277,670.59

13,206,141.03

	13,500,635.92	25,844,919.97
	13,500,635.92	25,844,919.97

1

41

1

	30,568,000.18	37,143,712.37
	16,959,420.00	16,959,420.00
	37,687,051.26	33,737,185.52
	29,016,371.91	25,908,247.99
		12,000,000.00
	39,853,247.46	44,672,774.72
	154,084,090.81	170,421,340.60

2

1

	16,959,420.00	
	16,959,420.00	--

42

43

	100,506,290.52	58,306,290.52
	35,843,668.62	17,442,627.65
	136,349,959.14	75,748,918.17

44

45

1

	295,364,597.96	230,810,888.48
	285,920,000.00	327,280,000.00
	581,284,597.96	558,090,888.48

1		2017
	2,000,000.00	
	2017	30,000,000.00
		2017
12 31	65,000,000.00	
2		188,583,517.13
	2017 12 31	91,510,888.48
	17,946,290.52	
3		100%
100,000,000.00		
	2017 12 31	100,000,000.00
	20,000,000.00	
4		190,000,000.00
	18.18%	
	2017 12 31	98,000,000.00
	21,200,000.00	
5		
317,000,000.00	2017 12 31	302,000,000.00
	2017 12 31	235,280,000.00
	33,360,000.00	
6		
	140,000,000.00	2017 12 31
100,000,000.00		
	2017 12 31	92,000,000.00
8,000,000.00		





100 /

0 0

5,000,000  
2

2016  
[2016]2521

2016 11 2

6 6

2016 11 23

6

100

2016 11 22 5

3.73% 3

2,424,500.00

47

1

	163,758,034.48	199,601,703.09
	163,758,034.48	199,601,703.09

1

-19

2

2017 12 31  
12,076,314.69

22,240,149.95  
10,163,835.26

48

1

2

49

50

51

	31,302,426.07	1,251,699.51	5,454,889.36	27,099,236.22	
	25,387,114.60		4,318,166.76	21,068,947.84	



52

53

		+					
	789,540,919.00						789,540,919.00

[2013] 410025

54

1

2

55

	505,025,641.62	6.12		505,025,647.74
	283,942,730.50			283,942,730.50
	788,968,372.12	6.12		788,968,378.24

6.12

-

56

57

		+					
	1,447.70	190.63			190.63		1,638.33

	1,447.70	190.63			190.63		1,638.33
	1,447.70	190.63			190.63	0.00	1,638.33

58

	1,056,462.64	3,716,491.72	2,619,604.81	2,153,349.55
	1,056,462.64	3,716,491.72	2,619,604.81	2,153,349.55

1 1,156,494.34

59

	105,817,563.50	69,565.77	105,887,129.27
	34,016,130.16		34,016,130.16
	139,833,693.66	69,565.77	139,903,259.43

60

	897,307,762.20	808,879,366.84
	897,307,762.20	808,879,366.84
	140,607,984.76	104,219,213.74
	69,565.77	
	15,790,707.02	15,790,818.38
	1,022,055,474.17	897,307,762.20

1)

2)

3)

4)

5)

**61**

	1,838,109,865.59	1,399,537,573.51	1,773,486,238.93	1,386,517,286.66
	22,526,558.06	11,579,722.18	27,639,693.83	11,116,663.14
	1,860,636,423.65	1,411,117,295.69	1,801,125,932.76	1,397,633,949.80

**62**

	3,344,773.81	2,973,399.18
	1,915,464.89	1,597,500.71
	7,729,702.24	6,694,161.97
	1,831,502.00	902,982.18
	146,989.90	27,637.33
	1,075,692.92	784,457.18
		2,340,999.11
	946,792.78	831,132.03
	48,994.45	343,558.18
		33,196.78
	17,039,912.99	16,529,024.65

**63**

	30,215,484.24	28,371,662.97
	1,482,114.05	1,744,641.13
	491,215.91	482,104.10
	2,460,735.77	2,349,565.39
	20,031,264.81	20,543,836.58

	11,590,591.46	7,972,828.04
	17,116,769.87	17,217,099.44
	83,388,176.11	78,681,737.65

## 64

	50,462,295.78	48,396,293.55
	10,537,717.41	9,708,068.06
	6,330,056.49	5,911,439.49
	3,875,994.04	3,351,450.11
	3,692,218.90	3,333,363.04
	4,018,003.56	4,985,603.34
	4,240,318.53	3,680,617.52
	6,561,149.16	6,897,916.84
	4,788,536.15	4,728,389.81
	41,693,968.54	40,878,263.70
	136,200,258.56	131,871,405.46

## 65

	111,001,660.31	106,176,017.35
	5,950,399.94	3,777,340.52
	4,216,712.00	-1,841,656.54
	1,784,982.68	1,865,137.14
	111,052,955.05	102,422,157.43

## 66

	-4,664,116.70	18,882,955.12
	248,223.30	-634,446.64
	17,977,035.35	

---

	422,500.00	
	13,983,641.95	18,248,508.48

---

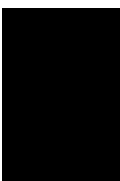
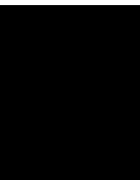
	350,482.80	
	694,482.72	

2016



---

							200,000.00	
							1,600,000.00	



-								
							56,000.04	
							8,345,418.89	
							64,482.36	
							265,714.32	
2014							52,120.08	
						3,023,834.40		

						633,829.90	615,171.85	
	--	--	--	--	--	3,657,664.30	17,804,204.09	--

72

	2,105,330.00	2,072,000.00	2,105,330.00
		3,279,610.10	
	17,219.30		17,219.30
	2,324,403.08	1,658,679.15	2,324,403.08
	4,446,952.38	7,010,289.25	4,446,952.38

73

1

	39,867,972.77	29,973,395.92
	-1,885,307.98	1,895,616.07
	37,982,664.79	31,869,011.99

2

	203,854,602.50
/	50,963,650.63
	-12,874,949.66
	-966,680.36
	-15,572,077.47
	3,306,207.55
	-5,368,266.25
	26,781,018.82

	-6,279,140.79
	-1,505,473.76
	-501,623.92
	37,982,664.79

74

57

75

1

	5,950,399.94	3,777,340.52
	5,867,785.43	12,143,130.15
	71,133,873.42	71,409,625.34
	82,952,058.79	87,330,096.01

2

	153,318,491.77	176,470,983.79
	153,318,491.77	176,470,983.79

3

	1,251,699.51	3,196,200.00
	55,000,000.00	10,000,000.00
		4,970,000.00
		149,000.00

		35,183,564.39
	56,251,699.51	53,498,764.39

**4**

		189,000.00
		14,112.98
		203,112.98

**5**

		352,989.96
	6.12	3.06
		12,000,000.00
	6.12	12,352,993.02

**6**

	1,250,000.00	1,250,000.00
		176,500,000.00
	29,975,109.20	21,985,686.72
		348,000.00
	12,000,000.00	
	110,000.00	252,000.00
	43,335,109.20	200,335,686.72

76

1

1	--	--
	165,871,937.71	120,223,240.60
	13,983,641.95	18,248,508.48
	157,369,885.15	141,630,413.63
	8,099,007.73	7,866,733.89
	3,090,188.91	2,374,668.72
	74,468.53	2,810,844.62
	-148,708.16	
	112,251,660.31	105,513,606.06
	-90,603,101.30	-85,133,141.45
	-901,934.52	2,832,607.66
	-983,373.46	-936,991.59
	-10,695,196.61	10,586,465.14
	15,258,887.99	-33,437,336.04
	-2,693,531.19	-16,944,138.36
	-3,734,184.67	3,724,877.01
	366,239,648.37	279,360,358.37
2	--	--
3	--	--
	451,031,774.44	309,458,022.09
	309,458,022.09	398,971,090.81
	141,573,752.35	-89,513,068.72

2

3

4

	451,031,774.44	309,458,022.09
	449,292.87	563,880.46
	450,567,218.36	308,891,336.83
	15,263.21	2,804.80
	451,031,774.44	309,458,022.09

77

78

	5,832,355.01	
	160,106,376.42	
	80,127,806.36	
	199,533,513.39	
	11,274,597.35	
	6,399,707.60	
	9,168,319.33	
	472,442,675.46	--

1

-1

2

-45

3

-19

---

**79****1**

	175.74	6.5342	1,148.32
	91.31	7.8018	712.38
	53,886,965.24	0.8359	45,044,653.12
	33,960.03	6.5342	221,901.63

**2****80****81****1****1****2****3****4**



5

6

2

1

2

3

3

4

5

1 2017 5  
100

100

100%

2 2017 2

51%

1000

**6****1****1**

				100.00%		
					100.00%	
				100.00%		
				100.00%		
					100.00%	
					100.00%	
					100.00%	
					51.00%	
				60.00%		
				60.00%		
				100.00%		
				100.00%		
					100.00%	
					100.00%	

					100.00%	
				72.00%		
				51.00%		
				84.00%		
					100.00%	
					100.00%	
					100.00%	
				86.24%		
					51.00%	
				100.00%		
				100.00%		
					100.00%	
				100.00%		
				100.00%		
				65.00%		

---

					83.38%	
					100.00%	
					100.00%	
					100.00%	
					100.00%	
					51.00%	

2

	16.62%	13,503,154.84	2,475,000.00	115,140,202.45
	35.00%	7,139,031.28		43,280,449.07
	16.00%	610,451.52	160,000.00	3,160,246.58
	40.00%	1,217,821.10		10,088,632.78
	40.00%	-83,118.33		2,944,456.98
	49.00%	4,313,036.24		79,725,741.86
	13.76%	1,566,702.58		46,934,342.58

3

	152,345,453.16	1,051,091,652.91	1,203,437,106.07	166,294,393.24	344,361,711.30	510,656,104.54	170,197,592.36	1,111,919,030.63	1,282,116,622.99	311,509,080.32	329,418,435.61	640,927,515.93
	71,774,953.16	292,450,172.81	364,225,125.97	175,566,700.05	65,000,000.00	240,566,700.05	55,437,993.78	236,114,281.08	291,552,274.86	217,113,344.92	33,000,000.00	250,113,344.92
	14,326,567.33	9,213,009.84	23,539,577.17	3,788,036.07		3,788,036.07	10,798,769.50	9,617,050.42	20,415,819.92	3,479,600.82		3,479,600.82

	45,849,486.66	18,136,224.90	63,985,711.56	38,764,129.61		38,764,129.61	42,542,197.71	18,991,852.85	61,534,050.56	39,357,021.35		39,357,021.35
	11,350,343.96	17,852,077	11,368,196.03	4,007,053.58		4,007,053.58	9,445,239.90	30,934.98	9,476,174.88	1,907,236.61		1,907,236.61
	72,315,417.92	361,070,854.54	433,386,272.46	68,760,676.83	201,920,000.00	270,680,676.83	63,293,024.34	380,999,136.13	444,292,160.47	55,108,679.61	235,280,000.00	290,388,679.61
	31,772,886.08	430,043,083.20	461,815,969.28	22,132,626.46	104,097,653.63	126,230,280.09	27,959,749.71	432,941,894.87	460,901,644.58	105,333,201.43	30,381,702.35	135,714,903.78

	207,450,052.06	66,480,144.47	66,480,144.47	141,560,331.16	174,505,635.63	52,784,003.21	52,784,003.21	124,273,168.45

157,788,768.21    20,397,232.23    [REDACTED]    [REDACTED]

4

5

2

1

2

3

1

2

3

4

	/	/
	--	--
	--	--
	--	--
	370,688,203.69	307,779,207.55
	--	--
--	25,116,563.13	29,691,766.54
--	25,116,563.13	29,691,766.54

5

6

--	--	--	--

/	

50.00%





	119,908,557.32	34,175,533.49	154,084,090.81
		1,096,080,728.17	1,096,080,728.17
	100,506,290.52	581,284,597.96	681,790,888.48
	35,843,668.62	163,758,034.48	199,601,703.10
	742,102,994.72	1,875,298,894.10	2,617,401,888.82

1

2

3

4

5

6

7

8

9

1

			3,519,400,000.00	25.83%	25.83%

2017 12 31  
25.83%

203,923,947

2





		53,133,260.51	200,000,000.00		50,996,282.53
		4,212,413.15	3,500,000.00		1,651,461.43
			70,183.00		2,171,455.91
		3,395,660.37	3,500,000.00		2,561,853.76
		7,512,582.51	12,060,000.00		7,322,880.24

					1,201,778.37

/

		5,822,854.18	5,064,739.61
		436,616.17	614,377.59
		471,698.10	
		4,010,177.84	1,866,443.51
		185,763.44	180,260.00
			47,275.30
		509,653.86	346,875.59
		10,942,139.61	7,112,599.65
		820.38	1,244.75
		651,539.31	6,054,417.53
		2,080,813.84	2,232,571.76
		9,339.62	
		451,229.91	277,955.58
		983,877.39	1,159,359.95
		500,279.39	547,320.06
		203,773.59	
		420,498.68	227,383.70
			32,849.40
		1,305,376.94	1,790,491.02
		13,584.93	14,749.35

		42,027.35	
		5,714,440.01	94,075.47
		1,967,246.52	
		9,182.71	
		708,683.28	
		94,576.65	
		14,150,943.45	2,718,446.61
		471,268.91	39,273.59

2 / /

3

		5,457,472.00	5,583,050.00
			10,572.00
		25,904.76	968,209.20
		92,301.81	101,357.70
		613,123.79	598,479.80
		240,000.00	560,000.02

		1,581,376.94	1,410,000.00
		34,914.87	15,763.44
		245,135.81	
		190,138.16	

			7,692.31
--	--	--	----------

4

	163,500,000.00	2017 09 30	2029 09 30	
	198,000,000.00	2016 10 13	2027 10 13	
	333,333,399.76	2014 08 27		



3 2011 3 22

5 8

8

2017 3

2017 3 -2018 2

125

		1,334,259.98	40,027.80	400,949.97	12,028.50
		233,426.40	7,002.79	40,345.56	1,210.37
		906,661.31	27,199.84	675,706.01	20,271.18
		3,756,946.55	112,708.40	3,336,608.95	100,098.26
		113,293.27	3,398.80	5,506,000.00	165,180.00
		30,000.00	900.00		
		542,852.72	16,285.58		
		858.00	25.74		
		57,331.13	1,719.93		
		24,764.15		202,995.28	
		1,615.77		138,914.60	
				261,529.61	
				117,949.21	
		49,471.83			
		42,160.00			
		4,914.00	2,457.00	4,914.00	2,457.00
				1,226.00	367.80
		101,645.20	36,143.56	101,645.20	18,164.52

		4,048.00	121.44	13,549.00	406.47
		1,309,644.52	317,855.53	1,210,830.65	36,324.92
		20,160.00	4,248.00	20,160.00	1,386.00
		393,767.49	39,376.75	413,455.86	12,403.68
		477,857.45	14,335.72		
				44,975.26	1,349.26
		85,600.00	2,568.00		
		250,000.00	7,500.00		
		65,218.00	6,521.80	312,013.00	9,360.39
				50,111.32	5,011.13

2

		3,069,096.99	290,512.31
			3,022.50
		155,261.70	
		21,800.00	
		310,515.07	
		24,510,321.35	10,530,002.37
		504,300.00	
		5,052,816.94	4,762,675.09

		30,150.94	
		286,594.44	
		673,572.85	
		874,065.48	
		1,876,091.42	2,305,207.60
		585,755.37	365,400.00
		306.80	
		71,893.34	
		893,248.92	
		22,067.17	
		4,438,845.99	75.00
		10,539.15	
		275,000.00	
			2,250.53
		2,418,000.00	3,017,500.00
		341,679.25	341,679.25
		60,024.73	60,393.08
			173,250.00
		32,159.77	
		58,833.07	68,833.07
		67,367.16	67,367.16
		14,593.50	18,062.39

]#S"é\* #SICL3ÓD• Úà

7

8

1

2

3

4

5

1

1 2011 11 10

65

6,129.5  
30%

9,430

65%

7

11,420.5

2

45%

45%

6,504.44

2							
1							
1	1					2014	10
		2,029.18					
			2017	12	27		2018
4							1
	2					2016	3
		2500				2,693,883.86	
	15					24,562,000.00	2,693,883.86
			2016			70%	
	3					2016	4
5,561,157.8						139,362.61	
7						5,011,157.80	2016
						70%	
	4	2017	2	15			
						2014	12
						968	2017
17						2017	11
						2017	12
						2017	12
	2018	3	2				
						4	26
	5	2016	9	12			
						882.70	
							77.21
							2017
5	24					2017	6
						2017	9
						2017	9
		2018	2	5			2018
							3
							9
	6					2016	11

	42,515,978.03	2,207,065.03	
		600	3600
	2017 12 12	12 22	2017 12 27
	3,400,942	109,877	2018 3 9
7		2016 10	
			2016 10
	3400		3400
92 12		78	2016
11			2017 1
4		2017 12 21	
8	2017		
1-3			2017 12 14
		2018 2 9	
2			
1			
2			
3			3,586,614.78
4			
		2006 10 18	
		80%	30 2017 12 31
2			
3			

1

	2017 12 4		
	A		
	157,908,183		
	25.83%		
	148,060		
A	6		
	40 3500		
	3 12000		
	2 22500		
	2 45000		
	2		
	22500 2018		
	1		
	[2018]28		

2

	28,423,473.08
--	---------------



3

4

1

1

2

2

3

1

2

4

5

6

1

2

3

4

7

8

1

1

2

3

4

5

6

2

1

	477,561,	99.06%	99,195.0	0.02%	477,462,2	613,682	99.27%	37,328.48	0.01%	613,645,02

	443.37		1		48.36	,350.59				2.11
	4,543,914.50	0.94%	4,543,914.50	100.00%		4,543,914.50	0.73%	4,543,914.50	100.00%	
	482,105,357.87	100.00%	4,643,109.51	0.96%	477,462,248.36	618,226,265.09	100.00%	4,581,242.98	0.74%	613,645,022.11

1			
	197,087.74	5,912.63	3.00%
2 3	932,823.78	93,282.38	10.00%
	1,129,911.52	99,195.01	8.78%

AMĐ 19 HT 19 T/TC MC 387.81/VIC 03 2672-509 BCC BAOC 06 P39-19/Lug 4310 M MB TIF 189 74

--	--



---

	6,194,752.03			6,194,752.03		
	8,000,000.00			8,000,000.00		
	5,100,000.00			5,100,000.00		

	272,831,000.00			272,831,000.00		
--	----------------	--	--	----------------	--	--

		50,149,449.63		50,149,449.63		
	1,929,419,666.27	95,209,749.63		2,024,629,415.90		9,509,739.73

2


29,305,19

-80,913.9

3.60

---

	9,729,504.22	3,653,200.00	11,875,310.16	5,102,155.46

	13,732,933.32	--
--	---------------	----

1

1

2

		/	/
	5.25%	0.1781	0.1781
	4.74%	0.1607	0.1607

3

1

2

3

4

1.

42

16

2016 1 1 2016 12 31



15,220,000.00	25,528,440.42
322,865,070.48	355,115,098.67
29,120,233.68	35,731,318.96
	18,065,724.03
60,898,909.01	<u>53,020,226.90</u>

	68,478,573.41	23,009,097.25	44,100,000.00
	230,190,020.46	177,832,985.34	175,484,933.21
	26,742,924.88	37,617,645.51	59,001,361.31
	44,862,527.72	46,415,284.60	50,088,849.81
	27,765,417.12	29,651,865.32	28,884,970.05
	30,294,212.19	31,858,481.36	32,259,545.05
	12,523,097.67	25,844,919.97	13,500,635.92
	168,916,806.73	170,421,340.60	154,084,090.81
	126,578,000.00	75,748,918.17	136,349,959.14
	1,133,851,580.18	885,900,538.12	927,754,345.30
	743,225,131.01	558,090,888.48	581,284,597.96
	499,747,500.00	1,094,116,959.31	1,096,080,728.17
	225,348,652.58	199,601,703.09	163,758,034.48
	65,874,128.65	56,689,540.67	48,168,184.06
	8,273,577.71	9,112,989.86	8,129,616.40
	1,542,468,989.95	1,917,612,081.41	1,897,421,161.07
	2,676,320,570.13	2,803,512,619.53	2,825,175,506.37
	789,540,919.00	789,540,919.00	789,540,919.00

	788,732,331.01	788,968,372.12	788,968,378.24
	1,051.33	1,447.70	1,638.33
	1,556.09	1,056,462.64	2,153,349.55
	139,833,693.66	139,833,693.66	139,903,259.43
	808,879,366.84	897,307,762.20	1,022,055,474.17
	2,526,988,917.93	2,616,708,657.32	2,742,623,018.72
	271,142,932.37	300,794,179.65	347,402,207.96
	2,798,131,850.30	2,917,502,836.97	3,090,025,226.68
	5,474,452,420.43	5,721,015,456.50	5,915,200,733.05

